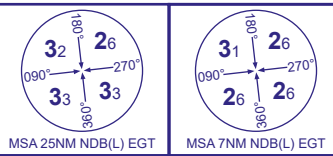


INSTRUMENT APPROACH - ICAO

LONDON/DERRY/ EGLINTON

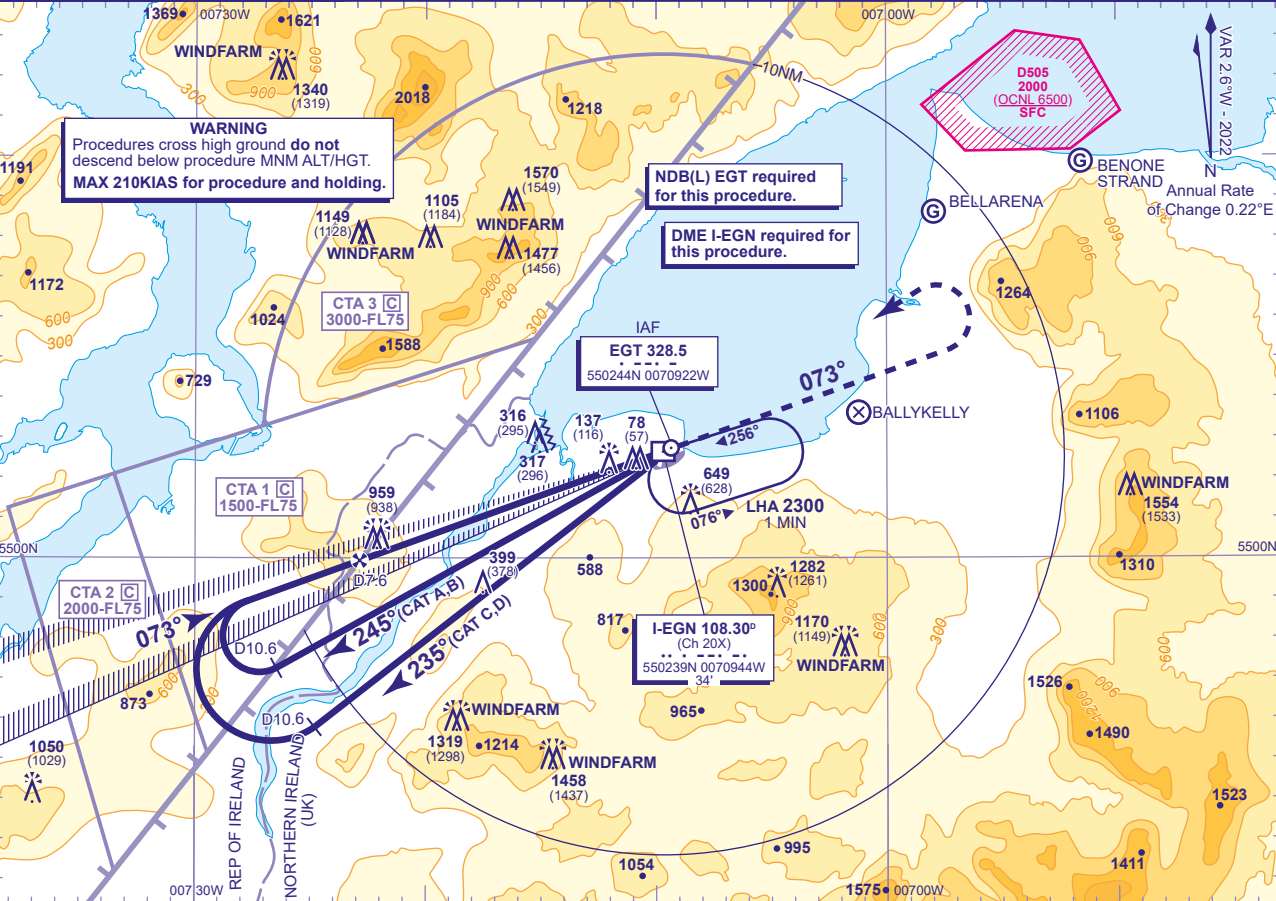
ILS/DME Z  
(Offset LOC)  
RWY 08  
(ACFT CAT A,B,C,D)



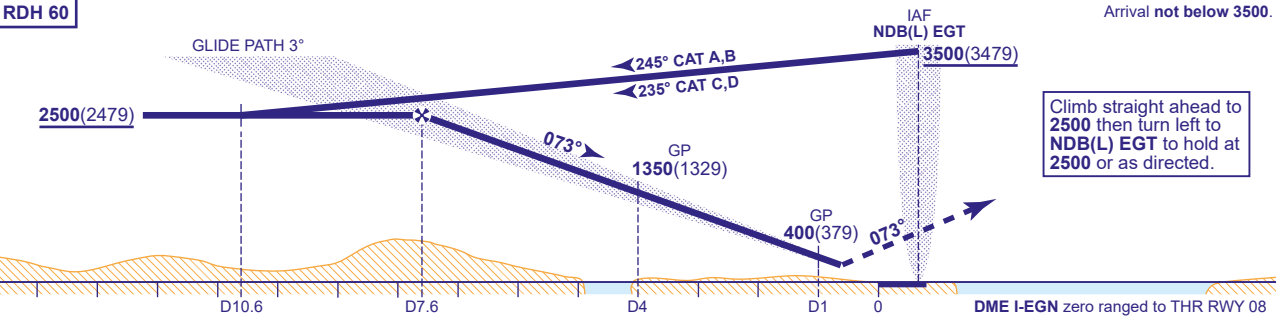
APP	123.625	EGLINTON APPROACH
TWR	134.155	EGLINTON TOWER
ATIS	119.380	EGLINTON INFORMATION

AD ELEVATION	23
THR ELEVATION	21
OBSTACLE ELEVATION	1570 AMSL (1549) (ABOVE THR)
BEARINGS ARE MAGNETIC	

TRANSITION ALTITUDE	3000
---------------------	------



RECOMMENDED PROFILE GLIDE PATH 3.0°, 318FT/NM							
DME I-EGN	7	6	5	4	3	2	1
ALT(HGT)	2310(2289)	1990(1969)	1670(1649)	1350(1329)	1040(1019)	720(699)	400(379)



Aircraft Category		A	B	C	D	Rate of descent	G/S KT	160	140	120	100	80
OCA (OCH)	CAT I	262(241)	262(241)	262(241)	262(241)		FT/MIN	850	740	640	530	420
VM(C)OCA (OCH AAL)	Total Area	950(927)	950(927)	1710(1687)	1710(1687)							
	North of RWY 08/26	420(397)	520(497)	720(697)	730(707)							

- NOTES 1 Lowest altitude to commence procedure from hold is 2500.  
2 LOC offset 2.7° from RWY 08 C/L.  
3 DME not usable below 3500 between 140° and 185° due to terrain effects.  
4 Aircraft are permitted to enter the Eglinton CTA areas whilst using these procedures and under the control of Eglinton ATC.

CHANGE (1/22): DME I-EGN DME ELEVATION.